

# Scratches in Horses

An infographic presented by

# BANIXX®



## ALSO CALLED:

- Pastern Dermatitis • Greasy Heel
- Mud Fever • Dew Poisoning



### SIGNS:

- |          |            |
|----------|------------|
| Swelling | Crustiness |
| Itching  | Scabs      |
| Flaking  | Cuts       |
| Redness  | Fungus     |
| Scaling  | Ringworm   |
| Oozing   |            |



This skin condition found generally in the areas below the knee and hock is caused by either a virus, bacterium, fungus, or parasites. Usually found in the back of the pasterns between the heel and the bulb of the pastern.

## WHO'S AT RISK?



Horses living in wetter or muddier than usual environments

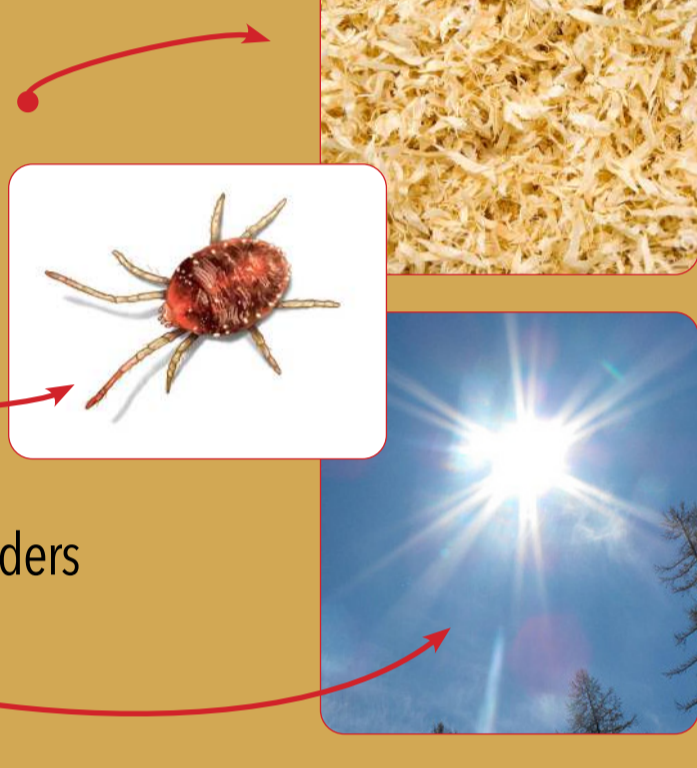
Horses with pink-skinned pasterns

A condition common to Draft horses due to the leg feathers but does affect all horses and ponies

## OTHER CAUSES

Contact irritants such as

- Bedding treated with chemicals
- Hyper-sensitivity to Insects
- Auto-immune Disorder
- Chorioptes mites
- Trauma
- Vascular /lymph-associated disorders
- Sensitivity to UV light



## TREATMENT

- Start by taking the horse off the wet environment
- Wash the area gently with an antibacterial soap
- Towel dry thoroughly
- Clip the hair surrounding the affected area
- Use a topical spray and wrap if necessary

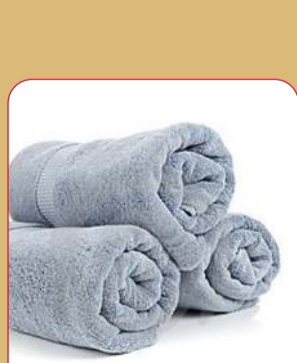
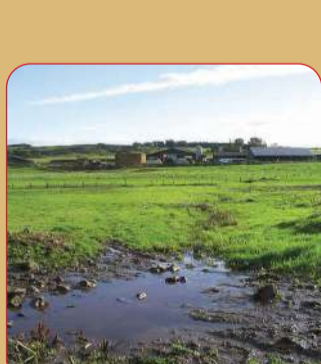
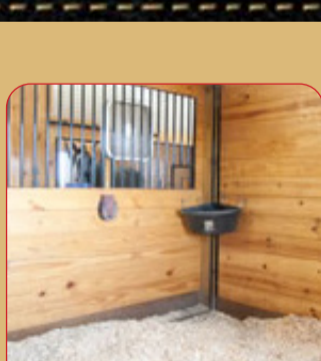


**Caution:** Your horse might be in enough discomfort to kick or strike out. If you observe proud flesh, keep it under control and monitor other unaffected legs to keep scratches from spreading.

For severe case (i.e. swelling, heat and lameness), call your vet, who can more accurately target treatment using diagnostics.

## PREVENTION

- Keep your stalls clean and dry
- Avoid muddy pastures
- Clip the fetlock hairs or feathers
- Keep your shin boots or wraps clean and dry before each use
- Turn out AFTER the morning dew has evaporated!
- For allergen-related issues, experiment with different bedding
- Keep your horse's legs clean and dry
- With issues UV-Related, avoid turn out while the sun is at it's peak; usually between 10 am to 4 pm



# BANIXX®